



Bilanciatori Mec

WWW.MECHETTI.COM

Technical characteristics

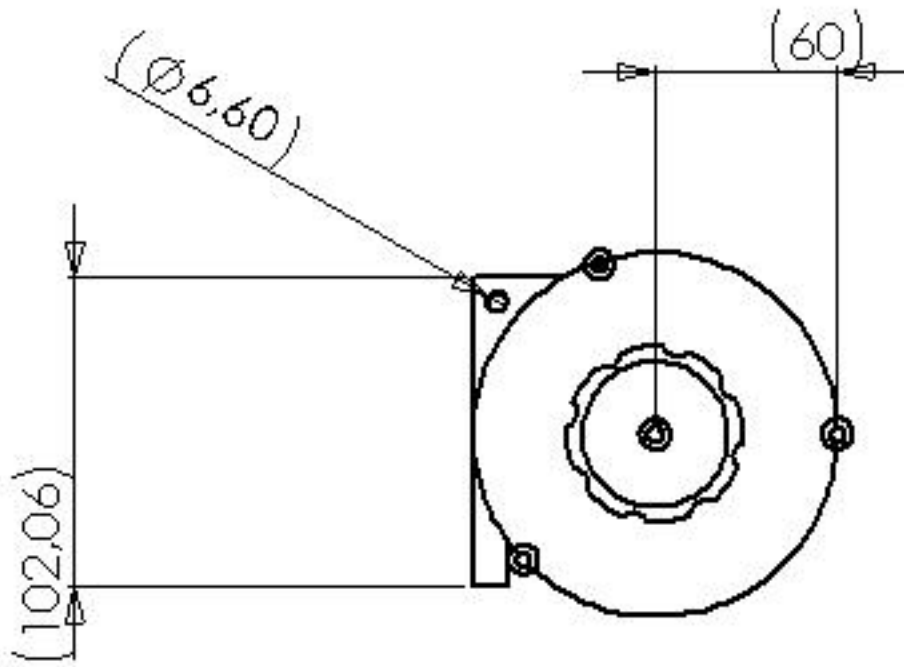
We produce Balancer Spring from over thirty years, constantly improving the qualities of our products selecting with care our suppliers to offer the best possible product to our clients. We can affirm to have reached a high quality and reliability that it allows us to guarantee our balancers for 5 years against every possible breakdown with the total and immediate substitution of the same product. .

The productive line MEC is composed from 6 models of Balancers that can cover the courses from 0,5 Kg up to 28 Kg

Models A/1/2/3			
Range	A/1	A/2	A/3
min / max	0,5 / 1,5 Kg	1,5 / 3 Kg	3 / 4 Kg
STRUCTURE	the balancer MEC is built in synthetic material, nylon fiber, very resistant to the falls and very light.		
INSIDE RUBBER BAND	Inside rubber band in extra moderate steel strong of varying thickness, in according the power of the model, from 0,4 to 0,7 mms, height 15 mm length 2,5 meters		
CABLE	Cable in Nylon or Steel with diameter 2,0mm with length 1,70 mt with rubber bumper and untied hook		
REGULATION POWER	Regulation of the course through comfortable external knob		
POSSIBLE CHANGES	Possibility to increase the length of the cable up to 2,10 mt Select possibility for the color of the shell external (Blue or Grey standard)		

Models BS/1/2/3/4			
Range	BS/1	BS/2	BS/3/4
Min / Max	3 / 6 Kg	5 / 10 Kg	10 / 18 Kg– 18/28 Kg
STRUCTURE	Balancers built with external shell in material synthetic (Nylon fiber) with parts inside of metal and central pivot of Steel. Internally a disk in steel makes it crushproof Inside conic structure for a constant tension of the applied strength		
INSIDE RUBBER BAND	Inside rubber band in extra moderate steel strong of varying thickness, to according to of the course of the model, from 0,7 to 1,00 mms, height 25 mms, length 2,5 meters		
CABLE	Cable in Nylon or in Steel with diameter 2,8 mm with length 1,70 ms with rubber bumper and untied hook		
REGULATION POWER	Regulation of the course through rubber band to external torsion		
POSSIBLE CHANGES	Use a Inox cable and possibility to increase the leinght of the calble at maximum of 2,20 mt		

All the used components are of Italian origin and furnished by firms of proved quality and efficiency

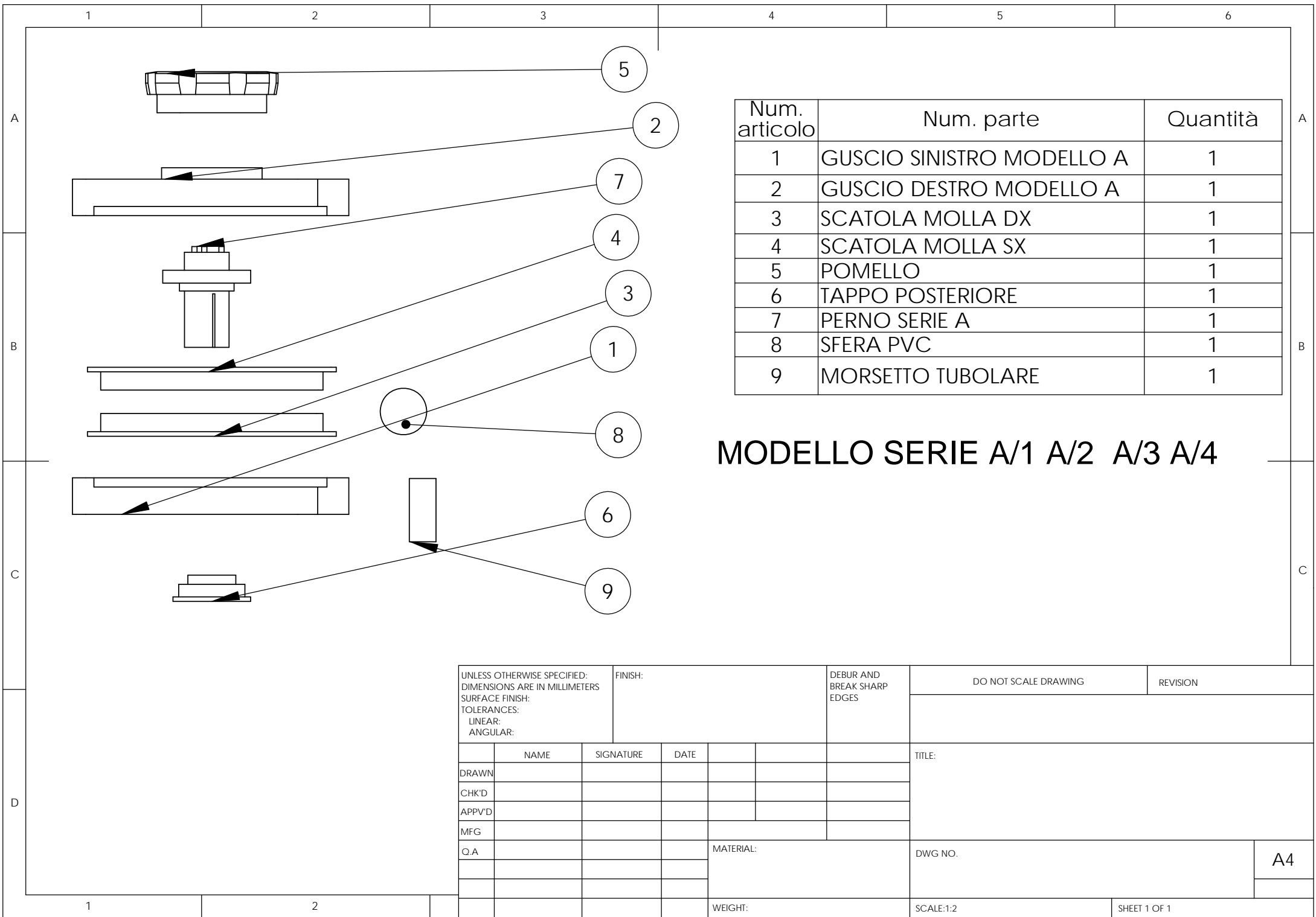


PROFESSIONAL AND CONFIDENTIAL
 THIS DOCUMENT CONTAINS PROPRIETARY INFORMATION
 OF MECHETTI ENGINEERING. IT IS TO BE KEPT
 STRICTLY CONFIDENTIAL AND NOT TO BE
 REPRODUCED OR DISCLOSED TO ANY OTHER
 PARTY WITHOUT THE WRITTEN PERMISSION
 OF MECHETTI ENGINEERING.

		DESCRIZIONE DIMENSIONI MATERIALI ANNOTAZIONI UNITA' DI MISURA UNITA' DI MISURA	UNITA' UNITA' UNITA' UNITA' UNITA' UNITA' UNITA' UNITA' UNITA' UNITA'	UNITA' UNITA' UNITA' UNITA' UNITA' UNITA' UNITA' UNITA' UNITA'
APPUNTI	MODIFICHE	NOTE		
APPUNTI	MODIFICHE	NOTE		
APPUNTI	MODIFICHE	NOTE		
APPUNTI	MODIFICHE	NOTE		
APPUNTI	MODIFICHE	NOTE		
APPUNTI	MODIFICHE	NOTE		
APPUNTI	MODIFICHE	NOTE		
APPUNTI	MODIFICHE	NOTE		
APPUNTI	MODIFICHE	NOTE		
APPUNTI	MODIFICHE	NOTE		

Mechetti Engineering

BY:	DATE:	REV:
A		
DATE:	BY:	

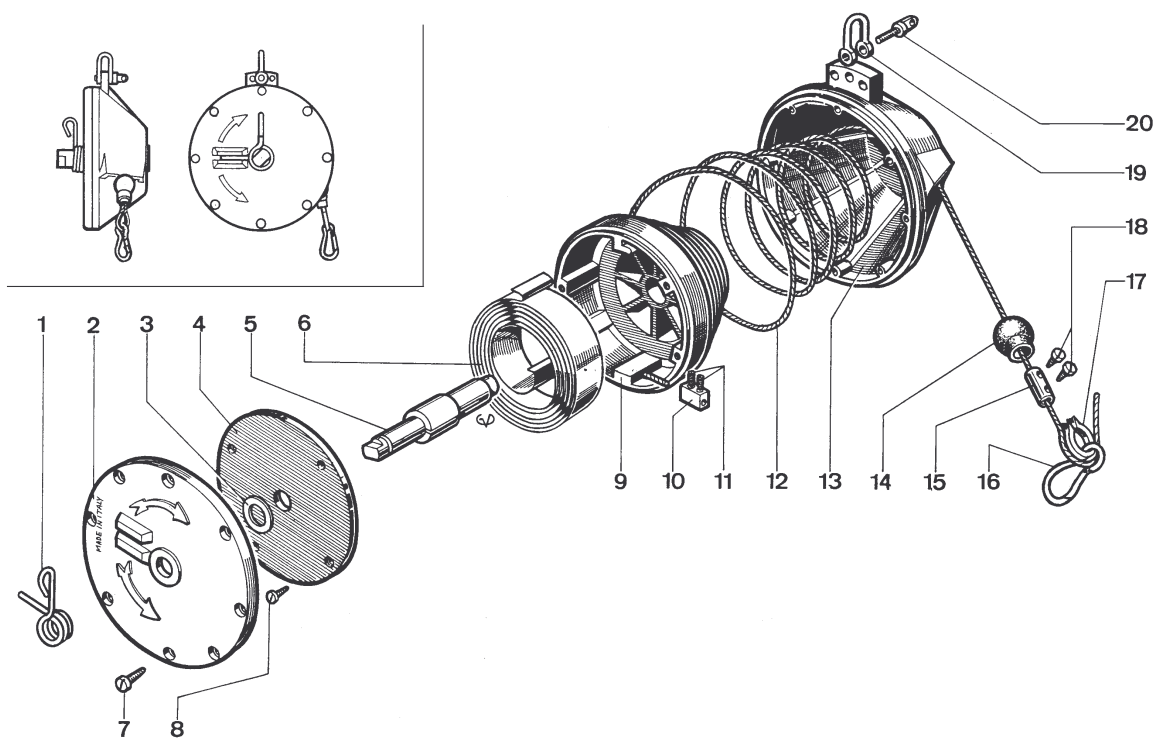


Num. articolo	Num. parte	Quantità
1	GUSCIO SINISTRO MODELLO A	1
2	GUSCIO DESTRO MODELLO A	1
3	SCATOLA MOLLA DX	1
4	SCATOLA MOLLA SX	1
5	POMELLO	1
6	TAPPO POSTERIORE	1
7	PERNO SERIE A	1
8	SFERA PVC	1
9	MORSETTO TUBOLARE	1

MODELLO SERIE A/1 A/2 A/3 A/4

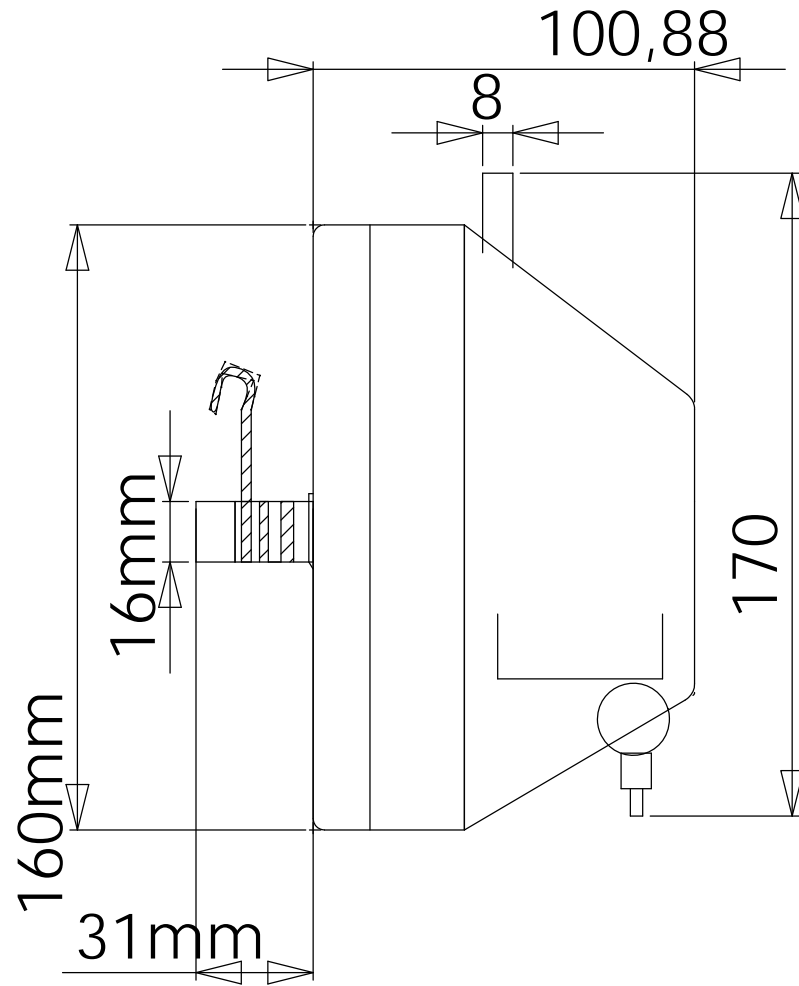
UNLESS OTHERWISE SPECIFIED: DIMENSIONS ARE IN MILLIMETERS SURFACE FINISH: TOLERANCES: LINEAR: ANGULAR:				FINISH:		DEBUR AND BREAK SHARP EDGES		DO NOT SCALE DRAWING		REVISION	
	NAME	SIGNATURE	DATE			TITLE:					
DRAWN											
CHK'D											
APPV'D											
MFG											
Q.A					MATERIAL:	DWG NO.					A4
					WEIGHT:	SCALE:1:2				SHEET 1 OF 1	

Schema tecnico Modelli BS/1/2/3/4



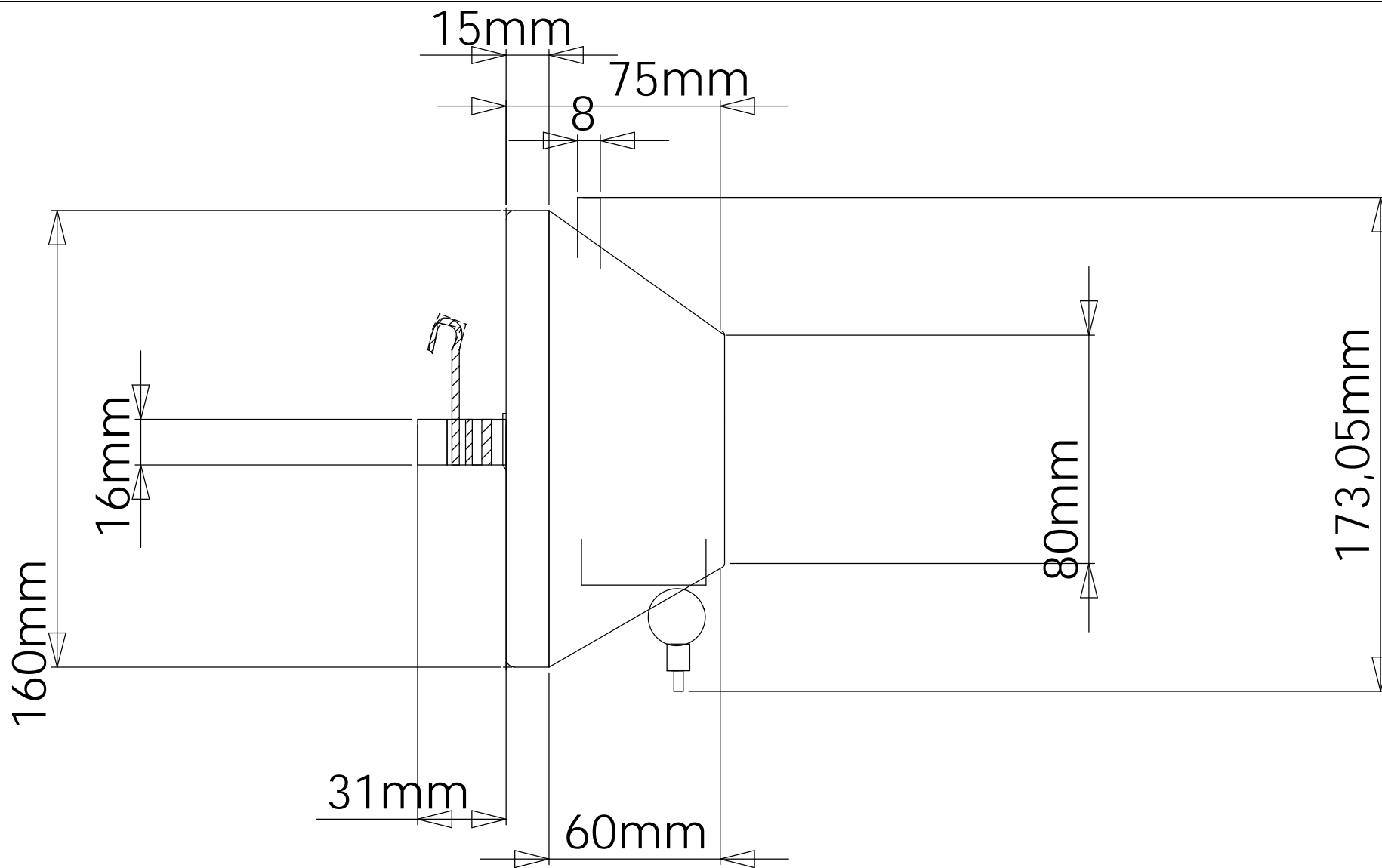
Componenti

1. Molla esterna Blocca Perno
2. Top
3. Rondella superiore
4. Disco in metallo copri - molla
5. Perno Centrale in Acciaio
6. Molla in acciaio Extra Strong Temperato nel modello BS3 sono montate due molle da 0,8*25 nel modello Bs/4 due molle da 1,0 * 25
7. Vite ferma Top
8. Vite ferma disco in Lamiera
9. Chiocciola Interna
10. Morsetto ferma cavo Interno
11. Viti ferma cavo Interne
12. Cavo in Nylon o Acciaio Inox lunghezza 1,70 mt
13. Guscio Esterno
14. Pallina In PVC antivibrazioni e paracolpi
15. Morsetto Ferma Cavo Esterno
16. Moschettone
17. Redance
18. Viti Ferma cavo Esterne
19. Morsetto del 5mm
20. Vite ferma Morsetto



PROPRIETARY AND CONFIDENTIAL
 THE INFORMATION CONTAINED IN THIS DRAWING IS THE SOLE PROPERTY OF <INSERT COMPANY NAME HERE>. ANY REPRODUCTION IN PART OR AS A WHOLE WITHOUT THE WRITTEN PERMISSION OF <INSERT COMPANY NAME HERE> IS PROHIBITED.

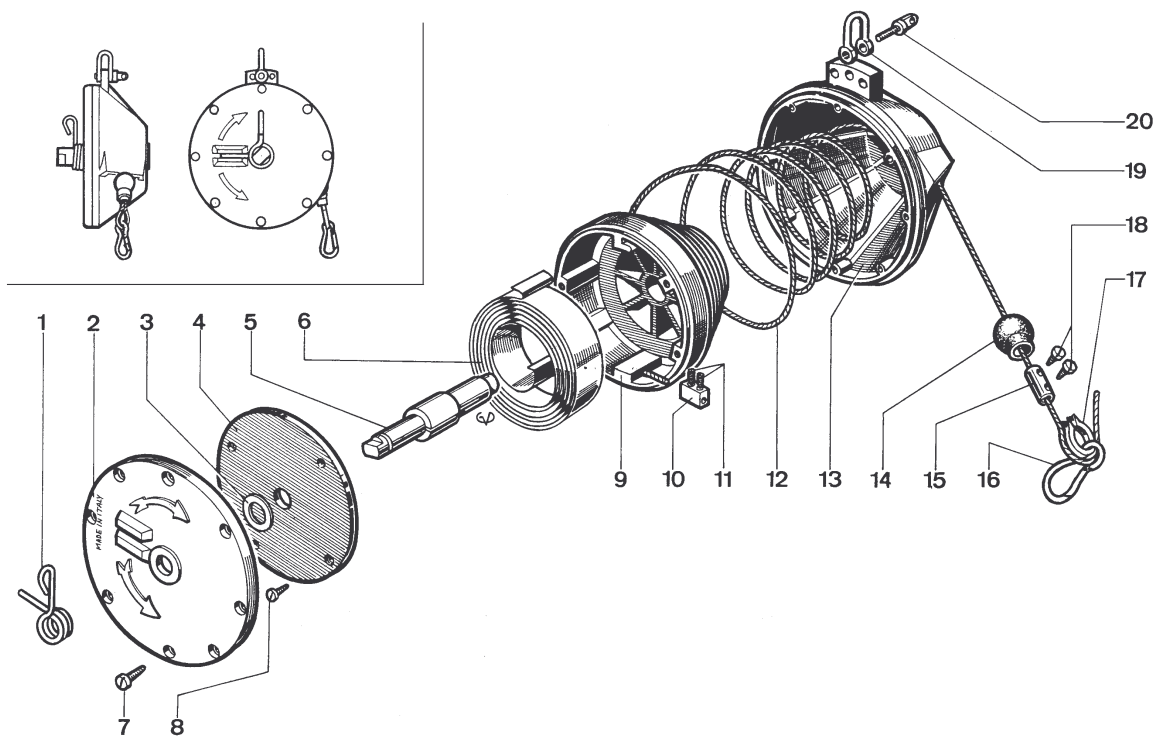
		DIMENSIONS ARE IN INCHES		NAME	DATE	MECHETTI
		TOLERANCES:		DRAWN		
		FRACTIONAL ±		CHECKED		MODELLI BS3/4
		ANGULAR: MACH ± BEND ±		ENG APPR.		
		TWO PLACE DECIMAL ±		MFG APPR.		
		THREE PLACE DECIMAL ±		Q.A.		
		MATERIAL --		COMMENTS:		
NEXT ASSY	USED ON	FINISH --				SIZE A
APPLICATION		DO NOT SCALE DRAWING				DWG. NO.
						REV.
				SCALE:1:2		WEIGHT:
						SHEET 1 OF 1



PROPRIETARY AND CONFIDENTIAL
 THE INFORMATION CONTAINED IN THIS DRAWING IS THE SOLE PROPERTY OF <INSERT COMPANY NAME HERE>. ANY REPRODUCTION IN PART OR AS A WHOLE WITHOUT THE WRITTEN PERMISSION OF <INSERT COMPANY NAME HERE> IS PROHIBITED.

		DIMENSIONS ARE IN INCHES		NAME	DATE	MECHETTI
		TOLERANCES:				
		FRACTIONAL ±		DRAWN		MODELLI BS1/BS2
		ANGULAR: MACH ± BEND ±		CHECKED		
		TWO PLACE DECIMAL ±		ENG APPR.		
		THREE PLACE DECIMAL ±		MFG APPR.		
		MATERIAL	--	Q.A.		SIZE A DWG. NO. REV. SCALE:1:2 WEIGHT: SHEET 1 OF 1
NEXT ASSY	USED ON	FINISH	--	COMMENTS:		
APPLICATION		DO NOT SCALE DRAWING				

Technical Scheme Models BS/1/2/3/4



Components

1. external spring Stopper/Pivot
2. Top
3. superior washer
4. disk in metal - rubber band cover-
5. Central pivot in Steel
6. rubber band in Extra steel Strong Tempered
7. Screw Top
8. Screw disk
9. Inside snail
10. Clamp stops Inside cable
11. Screw cable Inside
12. Cable in Nylon or Acciaio Inox length 1,70 mt
13. External shell
14. Little ball In PVC antivibrations and stops hits
15. Clamp Stops External Cable
16. Hook
17. Redance
18. Screws Stops cable External
19. 5mm clamp
20. Screws for clamp/hook (dubel for models bs/3 e Bs/4)